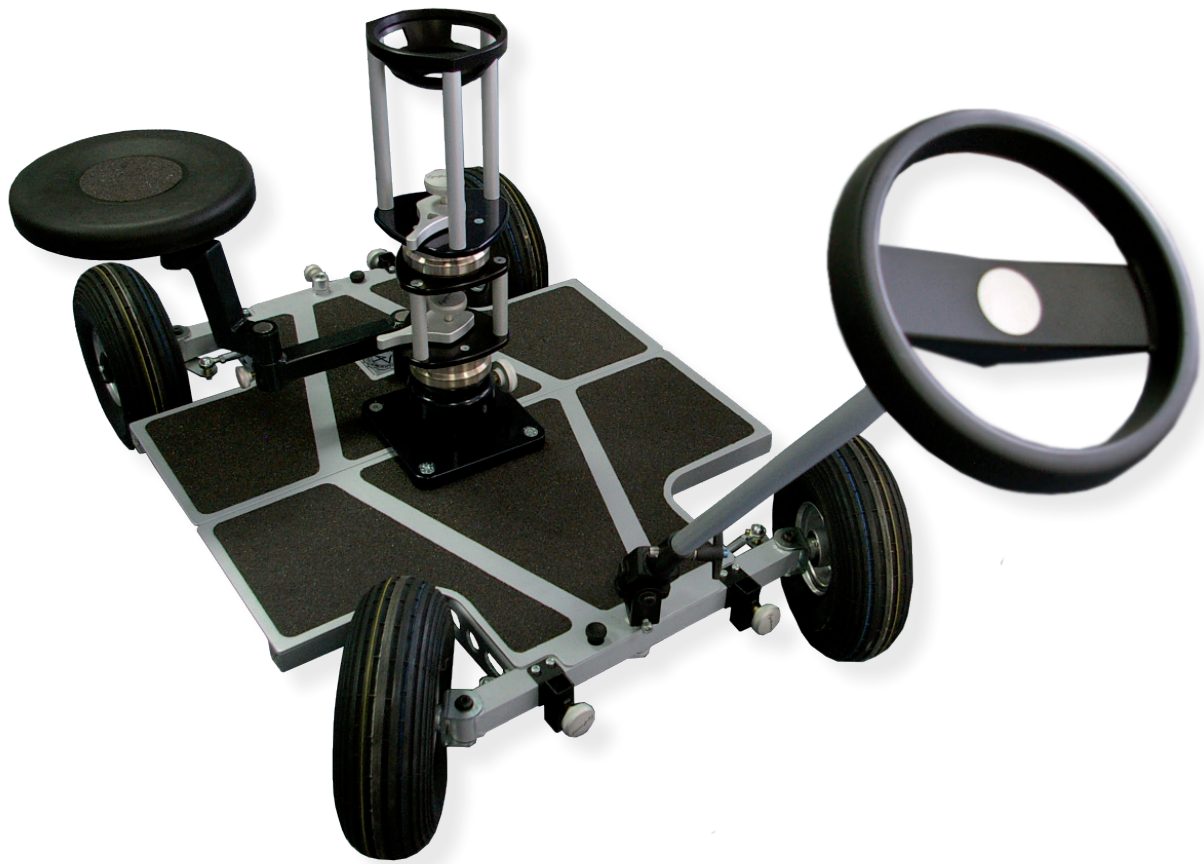


# The “Universal” Dolly



## “Universal” Dolly

Based on the proven features of the StarTrack dolly (foldable), Matador dolly, (Sliding push pull bar), Dinky dolly, (4 wheel steering at both ends) and Focus dolly (ultra-portable) the new “Universal” dolly combines all the best features of all Egripment Platform dollies.

The “Universal” Dolly utilizes a completely new method of steering, it folds into a small and lightweight package that weighs only 16.8 kg / 37 lbs., it carries a very good payload of 200 kg / 440 lbs., offers a solid camera platform, and it offers steering from the back or the front end, both 2 wheel steering and also 4 wheel steering when very tight turns are required. The minimum turn radius is only 85 cm/34 inches.

It can also be equipped with standard sideboards, or sideboards that contain 100mm or 150mm camera bowls, or for a tripod, and can be operated with Pneumatic Wheels, Hard Rubber Wheels, or Track Wheels. When equipped with Track Wheels it runs on standard width Track of 62 cm / 24.5” wide, straight and curved.

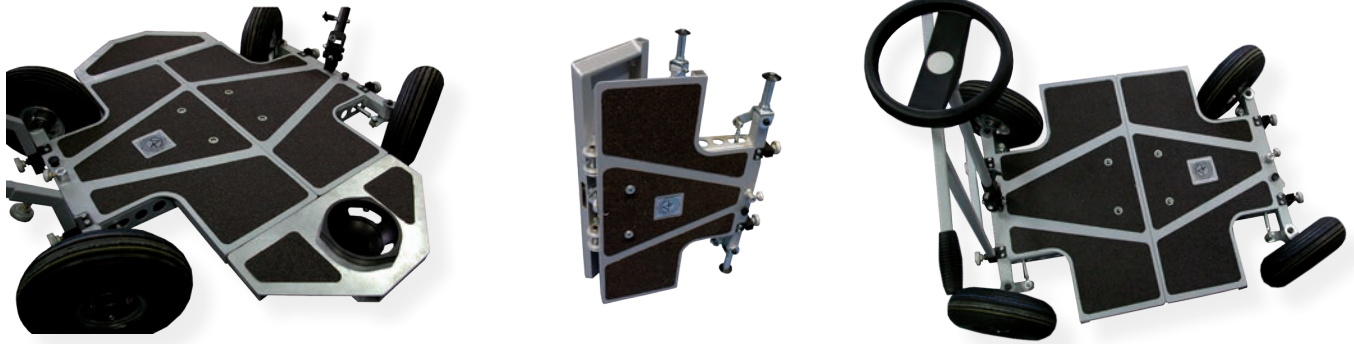
The “Universal” Dolly folds together into a small package that can be transported in a flight case.

In addition to the above mentioned options, it can also be equipped with most of the Egripment accessories such as seat supports, columns, bazookas and most of our Jib Arms.



# The "Universal" Dolly

EGRIPMENT SUPPORT SYSTEMS



The "Universal" Dolly is manufactured from lightweight but very strong aircraft grade aluminum. An Automotive design with Aerodynamics, Ergonomics and Style in mind.

Once camera operators see the "Universal" dolly, they will fall in love with it. It is the lightest, strongest and most versatile dolly ever created.

Specifications	Art.: 210 UNIVERSAL Dolly	
Length of Platform:	90 cm	36 inches
Overall Length:	115 cm	45.5 inches
Overall Width: (without side boards)	75 cm	30 inches
Length x Width x Height: (when folded):	50 cm x 75 cm x 12,5 cm	20 inch x 30 inch x 5 inch
Weight without wheels:	16,8 kg	37 lbs
Weight with Pneumatic wheels:	26,4 kg	58 lbs
Weight with Hard Rubber Wheels:	34,4 kg	76 lbs
Max Load Capacity:	200 kg	440 lbs
Minimum Turn Radius: (using 4 wheel steering)	85 cm	34 inches

*All data are subject to change without notification.*

## Accessories:

Side boards, Centre fixation for Tripod, Euro coupling fixation, Flight Case, Seat supports, Push/pull bar rack, Angle adapter for Push/Pull bar rack, Adjustable column, Bazooka, JanJib, Genie Jib, Pneumatic, Hard rubber, Track wheels, Camera riser, Camera leveler.



## EGRIPMENT SUPPORT SYSTEMS

### EGRIPMENT B.V.

Machineweg 22, 1394 AV Nederhorst den Berg, Holland  
Phone: +31 294 253988, Fax: +31 294 254658, sales@egripment.nl

### EGRIPMENT Deutschland GmbH

Immendorfer Straße 1, 50354 Hürth, Deutschland  
Phone: +49 2233 6877-0, Fax: +49 2233 6877-11, egripment@egripment.de

### EGRIPMENT U.S.A. Inc.

201 Center Park Drive, Suite 1010, Knoxville, TN 37922 USA  
Phone: +1 (865) 357-7535, Fax: +1 (865) 357-7536, egripment@egripment.com



Rev230113

[www.egripment.com](http://www.egripment.com)